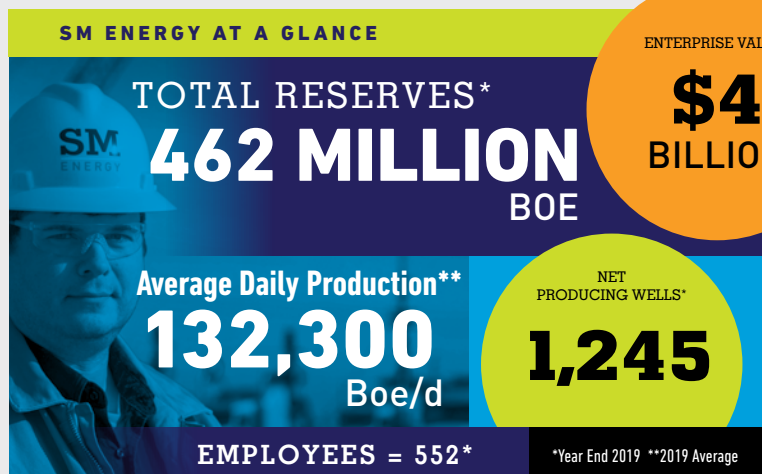
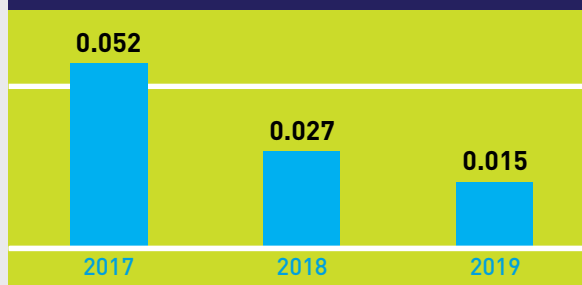


OPERATIONAL METRICS 2019

Production:	
Oil (MBbls)	21,873
Gas (MMcf)	109,804
NGLs (MBbls)	8,110
Total Production (MBoe)	48,284
Net operated wells completed: 131	
Net producing wells: 1,245	
Reserves:	
Oil (MMBbls)	184.1
Gas (Bcf)	1,223.2
NGLs (MMBbls)	74.0
Total Reserves (MMBoe)	462.0



Total Produced Fluid Spill Rate:
Produced Fluid Spilled/1000BBL Produced Fluid



ENVIRONMENTAL METRICS 2019

Flaring Percentage <i>(% gas flared to total production)</i>	1.3%
Greenhouse Gas Intensity Rate <i>(mT CO₂e/MBoe)</i>	12.4
Total Produced Fluid Spill Rate <i>Produced Fluid Spilled / 1,000 Bbls Produced Fluid</i>	0.015
Freshwater Used (MMBbl)	90.1
Recycled Produced Water (MMBbl)	7.5
Freshwater Intensity Rate <i>(barrels of freshwater used / Boe produced)</i>	1.38

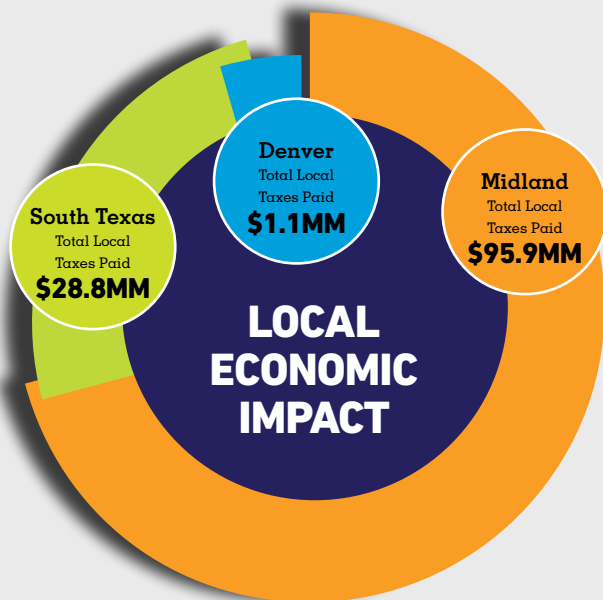
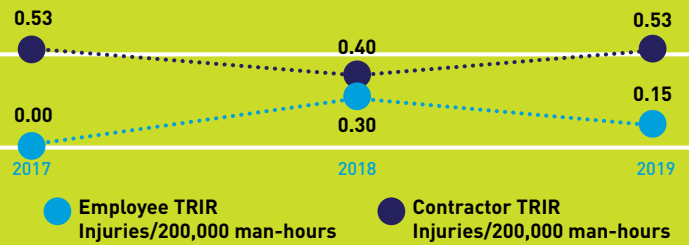
GOVERNANCE METRICS 2019

Board Members	9
Independent Board Members	89%
Gender or Ethnic Diversity	44%

HEALTH AND SAFETY METRICS 2019

Employee TRIR	0.15
Contractor TRIR	0.53
Combined TRIR	0.46

SAFETY METRICS: TOTAL RECORDABLE INCIDENT RATE (TRIR)



LOCAL ECONOMIC IMPACT 2019

Taxes Paid Midland (\$MM)	95.9
Taxes Paid South Texas (\$MM)	28.8
Taxes Paid Denver (\$MM)	1.1

SM Energy is a significant contributor to the economies of the states and communities where we live, work, and operate. The importance of our business to the local communities is underscored by more than \$100 million per year paid in state and local taxes.

WORKFORCE METRICS 2019

Number of Employees	552
Charitable Contributions (\$MM)	1.5
Community Service Hours	2,700
Gender Diversity	33%